

Choosing Your Housing

Which Housing Best Suits Your Needs?

Filtration applications are typically defined by the performance characteristics of the filter cartridge being used, however selecting the right filter housing can optimise and enhance the results achieved from different cartridges. To ensure the most precise and effective application, it is important to consider several factors, especially those that affect the systems operation, such as housing environment, system operating pressure, temperature, and chemical compatibility.



Plastic Multi-Purpose

Pressure

up to **8.6**
bar

Flow

up to **90**
lpm

Material

Lightweight, ergonomic, and constructed from 100% virgin materials, plastic housings offer good general chemical compatibility.

Environment

Ideal for commercial applications. Port sizes from 1/4" to 1". For use in areas protected from long exposure to UV light.



Stainless Steel Industrial

Pressure

up to **21**
bar

Flow

up to **3600**
lpm

Material

Manufactured from durable 316L stainless steel, these housings offer greater temperature capability and are finished with a protective polycoat layer for increased service life.

Environment

Equipped to deal with most commercial and industrial environments. Port options up to 6" DN150. Consideration should be taken in installations with acids, hydrocarbons, or high chloride levels.

Plastic

Suitable Applications

Economic and easy-to-use, compatible with almost all types of water, including seawater and deionised up to 40°C.

Unsuitable Applications

Synthetic oils, aromatic hydrocarbons and prolonged exposure to UV light.

Stainless Steel

Suitable for most fluids from tap water to beer, spirits and oils. Wider end-cap compatibility for an improved seal. Higher pressures and temperatures up to 135°C.

Elevated chloride concentrations, acids and halogenated hydrocarbons.



Inox High Flow Large Scale

Pressure

up to **10**
bar

Flow

up to **13,300**
lpm

Material

Robust in design, these 316L stainless steel housings are constructed with a glass bead finish to optimise housing life without excessive additional cost.

Environment

Tailored specifically for industrial high flow applications, swing-bolt closures and davit arm assemblies ensure simple cartridge changeout in what can be challenging environments.



Inox Sanitary High Purity

Pressure

up to **10**
bar

Flow

up to **560**
lpm

Material

Highly polished 316L stainless steel results in smooth internal and external surfaces to reduce microbiological growth.

Environment

With tri-clamp fittings, fewer internal parts and more accessible areas, these housings are designed for applications where filtrate quality is paramount.

Economic Plastic Filter Housing Systems

Single, Double or Triple Cartridge Round Housing

These smart SPECTRUM systems have been conveniently pre-assembled for easy and quick installation. Costing less than the sum of their individual components combined, the Aqualyze systems are anything but economic and are available in 10" and 20" Regular and Large Diameter sizes, with the unique option to select sump colour configurations. Coming fully assembled on the appropriate sized bracket with inlet/outlet gauges to monitor and maximise cartridge life, a spanner to assist with sump removal when performing maintenance cartridge replacement and connectors to configure the 1/4"-1" port sizes with the most common pipework, the extensive combinations in this range provide endless options for applications and flow rates.

Gauges

x2 gauges for single round, x3 for double and x4 for triple.



Packaging

The housings are packaged in protective boxes with clear labelling.



Bracket & Screws

Bracket is securely fixed to the head with screws and washers.

Head

Available in regular and large diameter with a range of port sizes.



O-ring

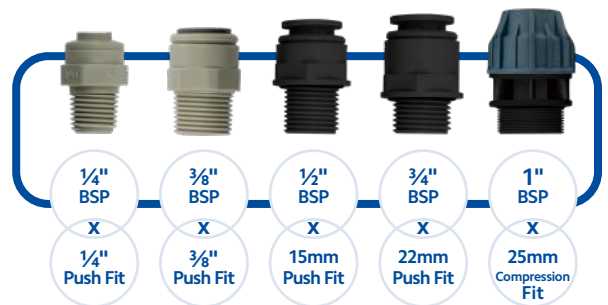
Positioned to create a watertight seal.



Sump

Options of either black (PK) or clear (SC).

Fitting Adaptors Included



Cartridge Compatibility

Designed to enhance the performance of the SPECTRUM cartridge range, whilst accommodating all industry standard cartridges.



Single Housing

Suitable where only one level of filtration is required to filter or treat the incoming fluid.

Sump options

Options of either a clear or a black sump in 10" or 20".



Double Housing

For systems that require prefiltration of a secondary low micron filter or water treatment cartridge to maximise service life.

Triple Housing

For applications that require varying levels of prefiltration or an array of treatment cartridges to remove multiple unwanted contaminants.



Economic Plastic Filter Housing Systems

Single, Double or Triple Cartridge Housing

Filtration systems are tailored to suit individual applications dependant on the level of filtration required. Single housings provide an effective one stage process, used to target specific contaminants for example, bulk solids, sediment or organics. Two-stage systems are implemented when an expensive secondary filter, such as a fine filtration or water treatment cartridge, benefits from prefiltration, prolonging service life. If applications demand a full filtration cascade, a three-stage system is recommended, which delivers a spatial and economic solution.

Pre-Assembled and Easy To Install

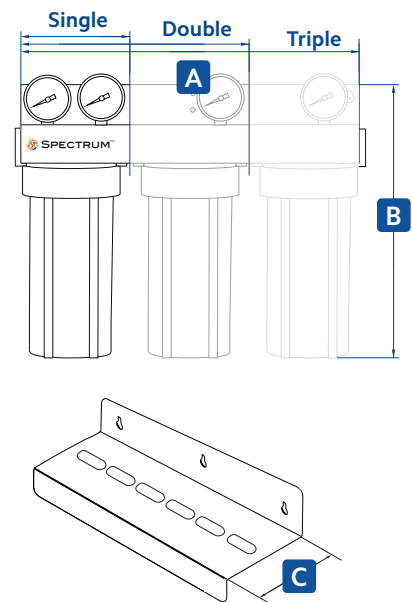


SPECTRUM

FDA
Compliant Materials

PED
Compliant
Article 4, Paragraph 3
Group 2 Liquids

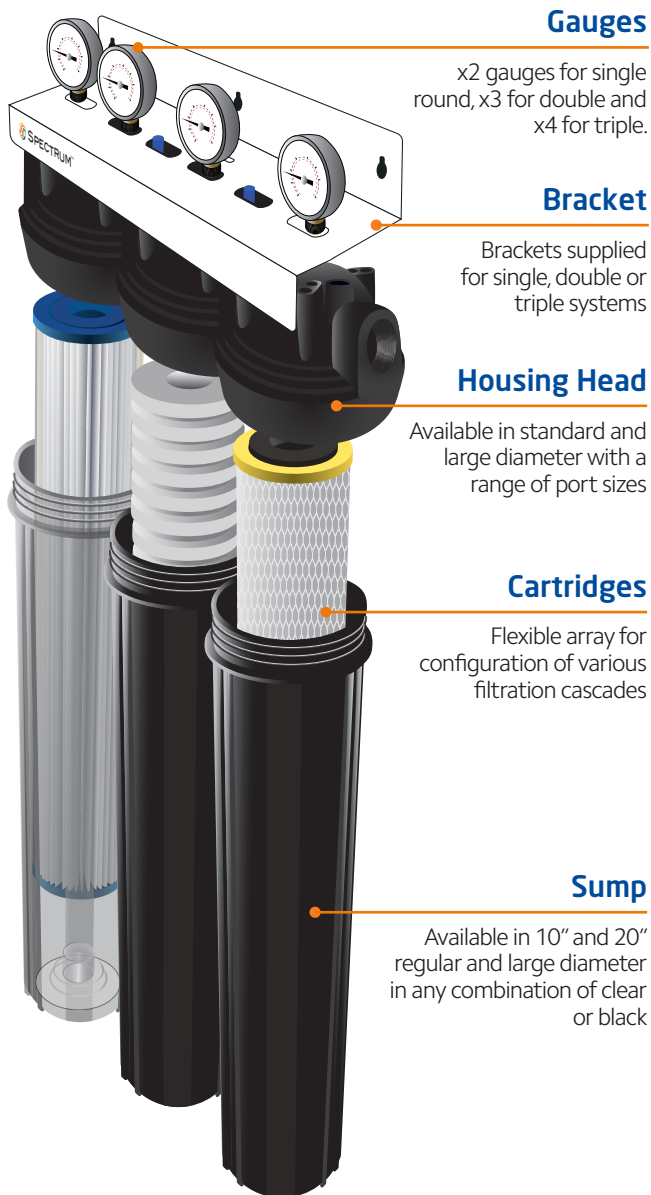
Technical Drawing



		Dimensions		
		Housing	A	B
Single	EFHS-10 (1/4, 3/8)	120	381	115
	EFHS-10 (1/2, 3/4)	120	381	115
	EFHS-20	134	645	115
	EFHS-10LD	117	472	175
	EFHS-20LD	117	730	175
Double	EFHS-10 (1/4, 3/8)	236	376	145
	EFHS-10 (1/2, 3/4)	236	376	145
	EFHS-20	236	640	145
	EFHS-10LD	410	450	191
	EFHS-20LD	410	708	191
Triple	EFHS-10 (1/4, 3/8)	360	376	145
	EFHS-10 (1/2, 3/4)	360	376	145
	EFHS-20	440	632	165
	EFHS-10LD	613	450	195
	EFHS-20LD	613	708	195

Key Features

- Complete packaged systems including all necessary accessories for installation and monitoring
- Full array of housing sizes and sump configurations to suit almost all application requirements
- Ergonomic and lightweight housings allow easy installation



Flow Rate (lpm)

	Carbon	Depth	Pleated
10"	3.8	20	25
20"	7.6	40	50
10"LD	7.6	20	50
20"LD	15.1	40	90

Specification

Port Sizes (BSP")

1/4	3/8	1/2	3/4	1
Supplied with 1/4 PF adaptors	Supplied with 3/8 PF adaptors	Supplied with 15mm adaptors	Supplied with 22mm adaptors	Supplied with 28mm adaptors

Cartridge Compatibility (")

9 3/4	9 7/8	10	20
Regular or LD			

End-Cap Compatibility (* Regular 10" only)

DOE	AA	213
Double Open ended eg. TruDepth	Gasket ended eg. Carbon block	CG* O-ring eg. Pleat

Temperature (°C)

4-40

Pressure Rating (bar)

8.6 6.9

(Regular SC & LD)

Materials

Head / Sump - Black PK = Polypropylene	Sump - Clear SC = Styrene Acrylonitrile
Gauge Brass/Stainless Steel	O-ring Buna-N
Bracket Powder Coated Carbon Steel	Nipple PVC
PRV Polypropylene	Spring 304 Stainless Steel

* PK - Black SC - Clear

Code	Material *			Cartridge (")	Port Size (")
	Housing 1	Housing 2	Housing 3		
EFHS	PK	PK	PK	10	1/4, 3/8, 1/2, 3/4
	SC	SC	SC	20	1/2, 3/4
	PK	PK	PK	10LD	1
	SC	SC	SC	20LD	

e.g. EFHS-PK/SC/PK-10-3/4

