

HIGH TEMPERATURE PLASTIC HOUSINGS

Constructed from high-strength glass-reinforced nylon, this housing provides a reliable and cost-effective alternative to stainless and carbon steel options. Featuring a robust, market-leading design, this housing excels in demanding environments, supporting temperatures up to 72°C and flow rates up to 50 lpm.

Its exceptional chemical compatibility, paired with a durable viton™ O-ring, ensures performance across a wide range of industrial applications, including filtration of organic solvents (excluding ketones), seawater, alcohol, petroleum, and vegetable oils. Designed to fit standard inline pipework, this housing delivers consistent, high-performance filtration where you need it most, offering outstanding value for a variety of industries.



FEATURES & BENEFITS



- Durable glass-reinforced nylon
- Excellent chemical compatibility
- Fits standard inline pipework
- Operates up to 72°C
- 10" and 20" options

MATERIALS OF CONSTRUCTION



O-ring:	Viton™
Head:	Nylon
Sump-Red:	Nylon

CHEMICAL COMPATIBILITY



Chemical	Nylon	Viton™
Amyl Alcohol	R	R
Benzene	R	R
Benzyl Chloride	R	R
Ethyl Chloride	R	R
Kerosene	R	R
Petroleum	R	R
Tetrachloroethylene	R	R
Xylene	R	R

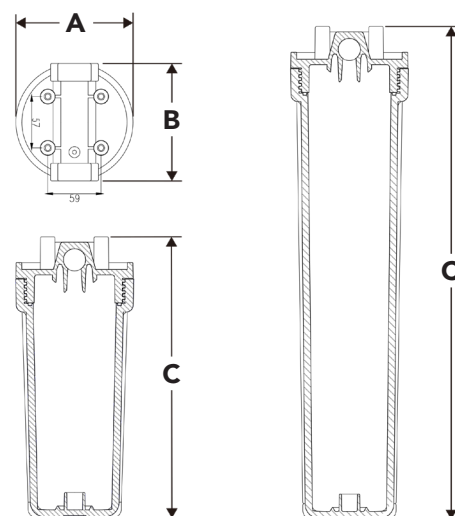
R - Resistant / LR - Limited Resistance / NR - Not Resistant

TECHNICAL DATA



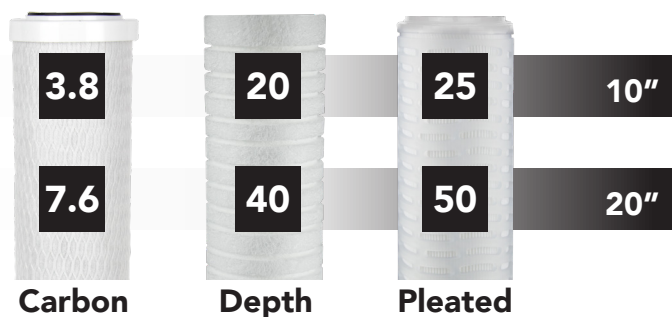
Port Sizes (BSP")	¾
Cartridge Compatibility (")	9¾, 9⅞, 10, 20
End-Cap Compatibility	DOE, AA, CG
Pressure Rating (bar)	6.3
Temperature Rating (°C)	4 - 72

DIMENSIONS

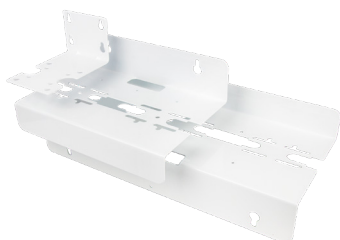


Dimensions (mm)			
Housing	A	B	C
SFH-NR-10"	132	135	317
SFH-NR-20"	132	135	578

FLOW RATE



ACCESSORIES


Brackets
EFH-BK

Brackets come in single, double and triple complete with wall and head mounting screws. Made from galvanized steel and coated with a white powdered finish, which prolongs the brackets life.


Spanners
SFH-SW20

These spanners have been specifically designed to not damage the sump, which makes them invaluable for cartridge change out.

ORDERING GUIDE



Standard High Temperature Filter Housings

Code	Description	Spanner	Brackets		
			Single	Double	Triple
SFH-NR-1-10-3/4	10" Regular High Temperature Filter Housing	EFH-SW20	EFH-BK-1-10	EFH-BK-2-10	EFH-BK-3-20
SFH-NR-1-20-3/4	20" Regular High Temperature Filter Housing				